



CY1446 Cygnet Pure Baby DK

Rose Dress

Size 6-12/12-18/18/-24 months

Measurements

Age		6-12 months	12-18 months	18-24 months
To fit chest	(in)	18	19	20
	(cm)	45.5	48	50.5
Actual chest measurement	(in)	20	21	22 ½
	(cm)	50.5	53	57
Actual length (Back neck to hem)	(in)	16¾	18¾	20
	(cm)	42.5	47	50.5

Materials

Cygnets Pure Baby DK Rose (Shade 2555)	100g	2	2	3
---	------	---	---	---

Needles

1 pair of 4mm needles
1 pair of 3.25mm needles

Notions

4 small buttons (approx. 14mm)

Tension

22 stitches and 28 rows to 10cm (4in) over stocking stitch on 4mm needles

IT IS ESSENTIAL TO WORK TO THE STATED TENSION TO ENSURE THE CORRECT SIZING. If you tension square has less stitches, use a thinner needle, if more, use a thicker needle.

Abbreviations

col	colour	inc	increase	alt	alternative	patt	pattern
k	knit	foll	following	w/o	without	yo	yarn over
p	purl	st	stitches	stst	stocking stitch	ins/cm	inches/centimetres
rs	right side	w/s	wrong side	kfb	knit into front and back of st		
wrap	On knit row, move yarn to front, slip next st purlwise, move yarn to back of work, slip st back onto left hand needle. On purl row, move yarn to back, slip next st knitwise, move yarn to front of work, slip stitch back onto left hand needle.						

BACK

With 4mm needles cast on 91[97:103]sts.

Knit 4 rows

Row 1: k1, *yo, skpo, k1, k2tog, yo, k1; rep from * to end

Row 2: purl

Row 3: k2, *yo, sk2po, yo, k3; rep from * to last 5 sts, yo, sk2po, yo, k2

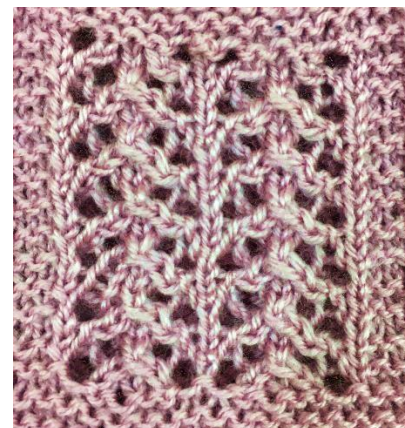
Row 4: purl

These 4 rows set border pattern.

Work a further 15 rows in patt, ending on Row 3.

Knit 3 rows.

Beginning with a knit row, stst 60[66:72] rows



Dec row: k1[2:3], (k3tog, k2) 18[19:20] times (55[59:63]sts)

Waistband

Knit 7 rows

Bodice

Row 1: k22[21:23], *yo, skpo, k1, k2tog, yo, k1; rep from * 2[3:3] times, k21[20:22]

Row 2: p19[18:20], k2, p13[19:19], k2, p19[18:20]

Row 3: k23[22:24], *yo, sk2po, yo, k3; rep from * 1[2:2] times, yo, sk2po, yo, k23[22:24]

Row 4: as Row 2

These 4 rows set Bodice pattern. Continue in patt for a further 6[10:12] rows.

Shape Armholes

Keeping patt correct, cast off 3 sts at beginning of next 2 rows. (49[53:57]sts)

Dec 1 st at each end of next 3 rows and each foll alt row until 39[43:45]sts remain.**

Work 20[24:26] rows in patt, ending on a ws row

Neckband

Next row: p11[10:11], k17[23:23], p11[10:11]

Next row: k to last 3[3:4]sts, wrap 1, turn

Next row: p8[7:7], k17[23:23], p8[7:7], wrap 1, turn

Next row: k to last 6[6:7]sts, wrap 1, turn

Next row: p5[4:4], k17[23:23], p5[4:4], wrap 1, turn

Next row: knit

Cast off.

FRONT

Work as for Back to **

Work another 6[10:12] rows in patt, ending on a ws row.

Neckband

Next row: p11[10:11], k17[23:23], p11[10:11]

Next row: knit

Repeat last two rows 2 more times

Shape Neck

Next row: p11[10:11], k2, cast off 13[19:19], k2, p11[10:11]

Continue working on last 13[12:13] sts as follows:

Next row (RS): knit

Next row: k2, purl to end

Repeat last two rows 3 more times

Knit 1 row

Next row: k2, purl to last 3[3:4]sts, wrap 1, turn

Next row: knit

Next row: k2, purl to last 6[6:7]sts, wrap 1, turn

Next row: knit

Buttonhole row: k4[3:4], k2tog, yo, k3, yo, k2tog, k2

Knit 2 rows

Cast off remaining sts.

With right side facing, rejoin yarn to remaining 13[12:13]sts and work as follows:

Next row: knit

Next row: purl to end to last 2 sts, k2

Repeat last two rows 3 times more

Next row: knit to last 3[3:4]sts, wrap 1, turn

Next row: purl to last 2 sts, k2

Next row: knit to last 6[6:7]sts, wrap 1, turn

Next row: purl to last 2 sts, k2

Next row: knit

Buttonhole row: k2, k2tog, yo, k3, yo, k2tog, k4[3:4]

Knit 2 rows

Cast off remaining sts.

SLEEVES (Make two)

With 3.25mm needles cast on 37[41:43]sts

Knit 3 rows

Inc row: k1[5:3], (kfb, k5[5:4]) to end (43[47:51]sts)

Row 1: k16[18:20], *yo, skpo, k1, k2tog, yo, k1; rep from * once more, k15[17:19]

Row 2: p13[15:17], k2, p13, k2, p13[15:17]

Row 3: k17[19:21], yo, sk2po, yo, k3, yo, sk2po, yo, k17[19:21]

Row 4: As Row 2

Rows 1-4 set Sleeve Pattern. Work 4 more rows in Sleeve Pattern

Sleeve shaping

Keeping pattern correct, cast off 3 sts at beginning of next 2 rows (37[41:45]sts)

Dec 1 st at each end of next and 2 following 4th rows, then on 4 following alt rows (23[27:31]sts)

Patt 1 row.

Dec 1 st at each end of next following 2[3:4] rows (19[21:23]sts)

Cast off 2 sts at beginning of next two rows (15[17:19]sts)

Work 0[1:0] row

Next row: k1, (k2tog) to end (8[9:10]sts)

Cast off.

Making up

Line up front and back, so back shoulder shaping lines up with front shoulder shaping before garter stitch buttonband and pin. Set in sleeves, making sure to catch the overlap of the buttonband in the seam. Join side seams.

Sew buttons in place.

NOT FOR RESALE



CYGNET

Cygnet Yarns Limited

12-14 Adelaide Street, Bradford, West Yorkshire, BD5 0EA

CY1446 © 2021 Designed and published by Cygnet Yarns Limited of 12-14 Adelaide Street, Bradford, BD5 0EA.

This pattern is protected by the law of Copyright of the United Kingdom and may not be reproduced or copied. This pattern may be used for manufacturing purposes up to a limit of 20 garments. For anything more than this, please contact Cygnet Yarns. All other rights are expressly reserved by Cygnet Yarns Ltd.