



CY1344 Kiddies Kaleidoscope DK Filet Hearts Blanket

Materials:

2 x 100g Balls Kiddies Kaleidoscope DK shade Yorkshire Mix 257 – Yarn A

1 x 100g Ball Pato Baby DK shade White 799 – Yarn B

4.5mm Crochet Hook

Darning Needle

Pattern Notes

UK Terminology used

The numbers at the end of the rounds in brackets, are the amount of stitches/pattern repeats you should have at the end of that row.

The chain 1 does not count as a stitch. Always work into the 1st stitch of the row unless otherwise stated.

Make sure to have 92 stitches at the end of row 12, or the next pattern section, will not line up.

Abbreviations explained

Tc in tc – work 1 treble crochet into the next treble crochet only

Tc in chsp – work 1 treble crochet into the chain 1 space from the row below

Tc 6 (7)(8) – 1 treble crochet into the next 6 (7) (8) treble crochet stitches and so on

Ch 1 / sk 1 – chain 1, skip 1 treble crochet

Abbreviations –	fptc – front post treble crochet	sk - skip
ch(s) - chain(s)	htc – half treble crochet	sp(s) - space(s)
chsp- chain space	t - turn your work	cor – corner
tc - treble crochet	nxt – next	slst – slip stitch
bptc – back post treble crochet	rept - repeat	fo – fasten off

With Yarn A Chain - 93

Row 1 – tc into 2nd ch from hook, tc into every ch across (92)

Row 2 – ch 1, t, tc 11, * ch 1, sk 1, tc 22 *, rept * to * 2 more times, ch 1, sk, tc 11

Row 3 – ch 1, t, tc 10, * ch 1 sk 1, tc in chsp, ch 1, sk 1, tc 20 *, rept * to * 2 more times, ch 1, sk 1, tc in chsp, ch 1 sk 1, tc 10

Row 4 – ch 1, t, tc 9, * ch 1, sk 1, tc in chsp, tc in tc, tc in chsp, ch 1, sk 1, tc 18 *, rept * to * 2 more times, ch 1, sk 1, tc in chsp, tc in tc, tc in chsp, ch 1, sk 1, tc in 9

Row 5 – ch 1, t, tc 8, * ch 1, sk 1, tc into chsp, tc 3, tc in chsp, ch 1, sk 1, tc 16 *, rept * to * 2 more times, ch 1, sk 1, tc in chsp, tc 3, tc in chsp, ch 1, sk 1, tc 8

Row 6 – ch 1, t, tc 7, * ch 1, sk 1, tc in chsp, tc 5, tc in chsp, ch 1, sk 1, tc 14 *, rept * to * 2 more times, ch 1, sk 1, tc in chsp, tc 5, tc in chsp, ch 1, sk 1, tc 7

Row 7 – ch 1, t, tc 6, * ch 1, sk 1, tc in chsp, tc 7, tc in chsp, ch 1, sk 1, tc 12 *, rept * to * 2 more times, ch 1, sk 1, tc in chsp, tc 7, tc in chsp, ch 1, sk 1, tc 6

Row 8 – ch 1, t, tc 5, * ch 1, sk 1, tc in chsp, tc 9, tc in chsp, ch 1, sk 1, tc 10 *, rept * to * 2 more times, ch 1, sk 1, tc in chsp, tc 9, tc in chsp, ch 1, sk 1, tc 5

Row 9 – ch 1, t, tc 4, * ch 1, sk 1, tc in chsp, tc 5, ch 1, sk 1, tc 5, tc in chsp, ch 1, sk 1, tc 8 *, rept * to * 2 more times, ch 1, sk 1, tc in chsp, tc 5, ch 1, sk 1, tc 5, tc in chsp, ch 1, sk 1, tc 4

Row 10 – ch 1, t, tc 4, * tc in chsp, ch 1, sk 1, tc 4, ch 1, sk 1, tc in chsp, ch 1, sk 1, tc 4, ch 1, sk 1, tc in chsp, tc 8 *, rept * to * 2 more times, tc in chsp, ch 1, sk 1, tc 4, ch 1, sk 1, tc in chsp, ch 1, sk 1, tc 4, ch 1, sk 1, tc in chsp, tc 4

Row 11 – ch 1, t, tc 5, * tc in chsp, ch 1, sk 1, tc in tc, ch 1, sk 1, tc in tc, tc in chsp, tc in tc, tc in ch sp, tc in tc, ch 1, sk 1, tc in tc, ch 1, sk 1, tc in chsp, tc 10 *, rept * to * 2 more times, tc in chsp, ch 1, sk 1, tc in tc, ch 1, sk 1, tc in tc, tc in chsp, tc in tc, ch 1, sk 1, tc in tc, ch 1, sk 1, tc in chsp, tc 5

Row 12 - ch 1, t, tc 6, * tc in chsp, tc in tc, tc in chsp, tc 5, tc in chsp, tc in tc, tc in chsp, tc 12 *, rept * to * 2 more times, tc in chsp, tc in tc, tc in chsp, tc 5, tc in chsp, tc in tc, tc in chsp, tc 6

Repeat rows 2 till 12 - 4 more times, fasten off A turn your work

Border –

Row 1 of the border will be worked into the spaces between the stitches along the top and bottom.

When working the sides, work into the space between the last 2 stitches of every row.

Depending on the row you are working you will need to work over either the tc or the tc and the turning ch.

Corners will be made by working 3 htc + ch 1 + 3 htc.

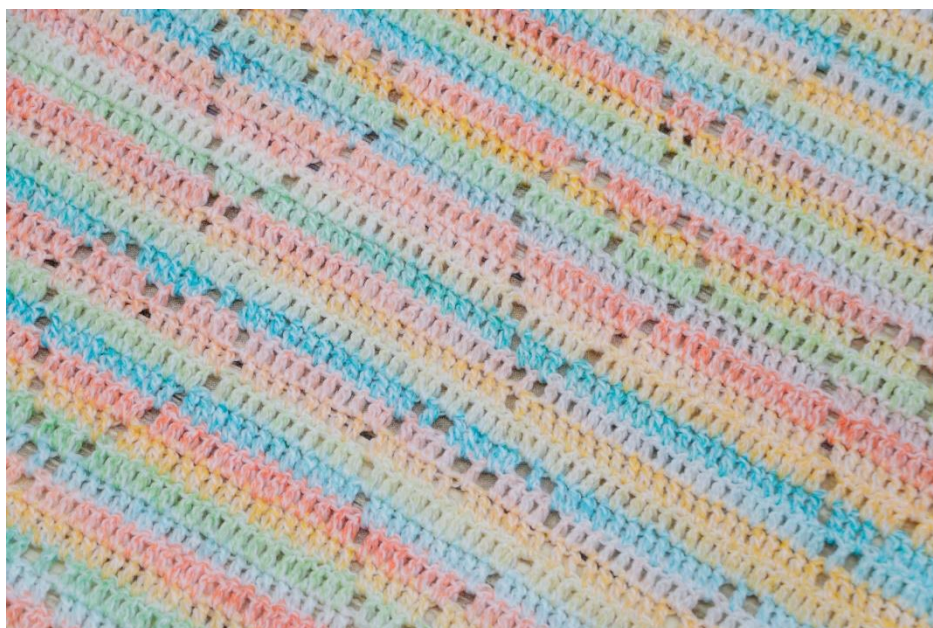
With the right side facing you, attach B into the space between the last 2 tc you just worked

Row 1 – ch 1, * htc + ch 1 + htc into 1st sp, htc into every sp across till you have 1 left, into last sp, 3 htc + ch 1 + 3 htc, working down the side work 2 htc into the end of every row *, rept from * to * once more slst to 1st htc

Row 2 – ch 1, fptc into 1st, bptc into nxt, rept around, slst to 1st fptc

Rows 3 and 4 - ch 1, fptc into fptc, bptc into bptc, slst to 1st fptc

Fasten off, weave in all ends.



Cygnet Yarns Limited

12-14 Adelaide Street, Bradford, West Yorkshire, BD5 0EA

CY1344© 2020 Designed by Gemma Brown and published by Cygnet Yarns Limited of 12-14 Adelaide Street, Bradford, BD5 0EA.

This pattern is protected by the law of Copyright of the United Kingdom and may not be reproduced or copied. This pattern may be used for manufacturing purposes up to a limit of 20 garments. For anything more than this, please contact Cygnet Yarns. All other rights are expressly reserved by Cygnet Yarns Ltd.