



**CY1062 GROUSEMOOR DK
CORNFLOWER CARDIGAN**
SIZES 1-5 YEARS

Measurements					
Age		1-2 years	2-3 years	3-4 years	4-5 years
To fit chest	(in)	22	23	24	25
	(cm)	56	58	61	63.5
Actual chest measurement	(in)	26 ½	29	31	33 ¼
	(cm)	67	72	78	83
Actual length (Back neck to hem)	(in)	11 ¾	12 ½	13 ¼	14
	(cm)	30	32	34	36
Sleeve length – cuff to underarm	(in)	7 ¾	8 ½	9 ½	10 ½
	(cm)	20	22	24	27
Materials					
Grousemoor DK Cornflower (156) Col A	100g	2	2	2	3
Grousemoor DK Rhubarb (419) Col B	100g	1	1	1	1
Grousemoor DK Custard (215) Col C	100g	1	1	1	1
Grousemoor DK Basil (823) Col D	100g	1	1	1	1
Needles	Notions		Tension		
1 pair of 4mm needles 1 pair of 3.25mm needles	7 small buttons 4 stitch holders		22 stitches and 30 rows to 10cm (4in) over stocking stitch on 4mm needles		
IT IS ESSENTIAL TO WORK TO THE STATED TENSION TO ENSURE THE CORRECT SIZING. If you tension square has less stitches, use a thinner needle, if more, use a thicker needle.					

Abbreviations							
col	colour	inc	increase	alt	alternative	patt	pattern
k	knit	fol	following	w/o	without	yo	yarn over
p	purl	st	stitches	stst	stocking stitch	ins/cm	inches/centimetres
rs	right side	w/s	wrong side	kfb	knit into front and back of st		

BACK

Using 3.25mm (US 3) needles and Col A cast on 67[69:73:77]sts.

Row 1 (RS): k1, *p1, k1; rep from * to end.

Row 2: p1, *k1, p1; rep from * to end.

These 2 rows form rib st.

Repeat Rows 1-2 twice more.

Change to 4mm (US 6) needles.

Row 7 (RS): knit, inc

9[11:11:11]sts evenly across row (76[80:84:88]sts)

Row 8: purl

Continuing in stst, work Chart A, reading from right to left on odd rows and left to right on even rows.

Work straight in stst until back measures 16[17:19:20]cm (6 ¼[6

½:7 ¼:7 ¾]ins), ending with RS facing for next row.

Shape armholes

Cast off 3 sts at beg of next 2 rows. (70[74:78:82]sts)

Dec 1 st at each end of next 3 rows. (64[68:72:76]sts)

Cont straight in stst until armhole measures 14[15:15:16]cm (5 ½[6:6:6 ¼] ins), ending with RS facing for next row.

Shape shoulders and back neck

Next row (RS): Cast off 9[10:10:11]sts, knit until there are 10[11:12:13] sts on right needle and turn, leaving remaining 45[47:50:52]sts on a holder. Working on these sts only, dec 1 st at beg of next row. Cast off 9[10:11:12]sts.

With RS facing, rejoin yarns to rem sts, cast off centre 26[26:28:28]sts, purl to end.

Next row (WS): cast off 9[10:10:11]sts, purl to end (10[11:12:13]sts) Dec 1 st at beginning of next row Cast off 9[10:11:12]sts.

LEFT FRONT

Using 3.25mm (US 3) needles and Col A cast on 36[40:44:48]sts. Work in rib st as given for back for 6 rows, ending with RS facing for next row.

Change to 4mm (US 6) needles

Beginning with knit row, stst 2 rows.

Work Chart A.

Work straight until left front matches back to beg of armhole shaping, ending with RS facing for next row.

Shape armhole

Cast off 3 sts at beg of next row. (33[37:41:45]sts). Purl 1 row. Dec 1 st at armhole edge of next 3 rows. (30[34:38:42]sts) Cont straight until 7 rows fewer have been worked than on back to beg of shoulder shaping, ending with WS facing for next row.

Shape neck

Cast off 6[8:11:13] sts at beg of next row. (24[26:27:29]sts). Dec 1 st at neck edge on next 6 rows, ending with RS facing for next row. (18[20:21:23]sts)

Shape shoulder

Cast off 9[10:10:11]sts at beg of next row. Work 1 row. Cast off rem 9[10:11:12]sts.

RIGHT FRONT

Using 3.25mm (US 3) needles and Col A cast on 36[40:44:48]sts. Work in rib st as given for back for 6 rows, ending with RS facing for next row.

Change to 4mm (US 6) needles. Beginning with knit row, stst 2 rows.

Work Chart A.

Work straight until right front matches back to beg of armhole shaping and work 1 more row, ending with WS facing for next row.

Shape armhole

Cast off 3 sts at beg of next row. (33[37:41:45]sts). Knit 1 row. Dec 1 st at armhole edge of next 3 rows. (30[34:38:42]sts) Cont straight until 8 rows fewer have been worked than on back to beg of shoulder shaping, ending with RS facing for next row.

Shape neck

Cast off 6[8:11:13] sts at beg of next row. (24[26:27:29]sts). Dec 1 st at neck edge on next 6 rows, ending with WS facing for next row. (18[20:21:23]sts)

Shape shoulder

Cast off 9[10:10:11]sts at beg of next row. Work 1 row. Cast off rem 9[10:11:12]sts.

SLEEVES (Make two)

Using 3.25mm (US 3) needles and Col A cast on 36[40:40:44]sts. Work in rib st as given for back for 6 rows, ending with RS facing for next row.

Change to 4mm (US 6) needles. Beginning with knit row, stst 2 rows.

Work Chart B, working increases as follows:
Inc 1 st at each end of 3rd and foll 4th row until there are 64[68:68:70]sts.
Cont straight until sleeve measures 20[22:24:27]cm (7 $\frac{3}{4}$ [8 $\frac{1}{2}$:9 $\frac{1}{2}$:10 $\frac{1}{2}$]ins), ending with RS facing for next row.

Shape top

Cast off 3 sts at beg of next 2 rows. (58[62:62:64]sts) Dec 1 st at each end of next and foll 2 alt rows, then on foll row, ending with RS facing for next row. Cast off rem 50[54:54:56]sts.

MAKING UP

Steam block pieces. Join both shoulder seams using mattress stitch.

Neckband

With 3.25mm needles and Col A, pick up and knit 15[17:20:22]sts up right side of neck, 25[25:27:27]sts along back neck and 15[17:20:22]sts down left side of neck. (55[59:67:71]sts)
Row 1: p1, (k1, p1) to end
Row 2: k1, (p1, k1) to end

Repeat Rows 1-2 once more then rep Row 1 once more.
Cast off loosely in rib.

Button band

With 3.25mm needles and Col A, pick up and knit 74[78:82:86]sts up left front edge.
Work in rib st as given for Back for 6 rows.
Cast off in rib.

Buttonhole band

With 3.25mm needles and Col A, pick up and knit 74[78:84:86]sts down right front edge.
Work in rib st as given for back for 2 rows.
Buttonhole row: rib 4[2:2:4], (yo, k2tog, rib 9[10:11:11]) to last 4 sts, yo, k2tog, k2
Work 3 more rows in rib.
Cast off in rib.

Set in sleeves. Sew sleeve and side seams. Weave in loose ends.

CHART A

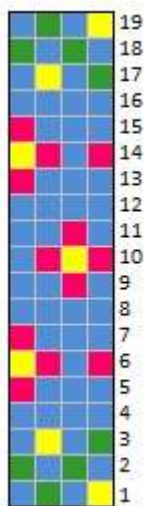
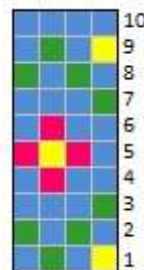


CHART B



Cygnets Yarns Limited

12-14 Adelaide Street, Bradford, West Yorkshire, BD5 0EA

CY1062© 2017 Designed and published by Cygnets Yarns Limited of 12-14 Adelaide Street, Bradford, BD5 0EA.

This pattern is protected by the law of Copyright of the United Kingdom and may not be reproduced or copied. This pattern may be used for manufacturing purposes up to a limit of 20 garments. For anything more than this, please contact Cygnets Yarns. All other rights are expressly reserved by Cygnets Yarns Ltd.